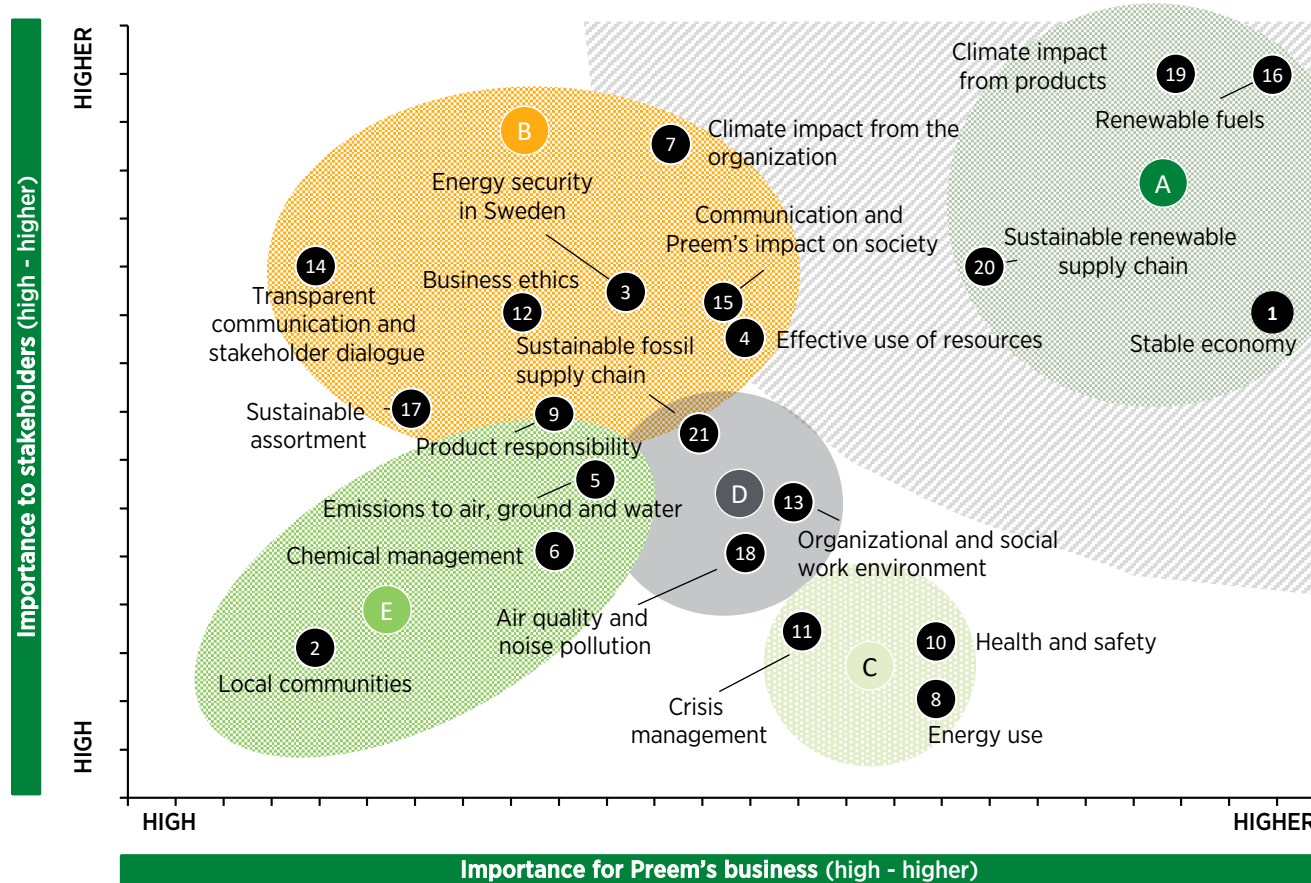


# Materiality map



- A LEADING**  
Areas where Preem should be leading or among the leaders in the industry ( based on a European perspective).
- B COMPLETE & COMMUNICATE**  
Areas where Preem needs to have a clear communication on the work that is being done to the stakeholders.
- C EXECUTE**  
Areas that Preem needs to deliver on to ensure business value.
- D MONITOR**  
Areas Preem need to monitor and take into account as they involve a high risk to the business. Preem does not have any measures connected to the areas.
- E MANAGE**  
Areas where Preem needs to manage and maintain a good level for Preem not to risk its "license to operate" or the brand. The areas will not give further effect of being a leader in.